

BACKSTAGE

VENUE SPECS

BACKSTAGE MUNICH HALLE



03 - 2026

Index

2	Sound
4	Light
5	Stage, Pyro
6	Lightpatch
12	Lightplot

SOUND

PA-System:

2x 6 CODA LA12
4x CODA U4
4x CODA APS (near)

PA-Amping:

6x Linus C10
1x Linus 14D

FOH Desk:

Midas Heritage HD 96
Shoutbox FoH ↔ Monitor **Monitor**

Desk:

Midas M32

Stagerack:

Midas DL251 Stagebox
(48 CH. In/ 16 Ch. Out)

Stagebox:

48 Channel analog passive 2 Way Split
(2 x Multipin)

Multicore:

8x CAT 5
4x XLR

Monitor Speaker:

10x Coda Audio Cue One (2x12" / 1,4" coax) active
4x Coda Audio G15 (1x 15") - Drumfill Sub
1x Coda Audio Cue One (2x12" / 1,4" coax) active – Drumfill Top
3x Coda Audio G15 (1x15") – Sidefill Sub
2x Coda Audio RX 40 (2x12" / 2") active – Sidefill Top

Monitor Amping:

5x Linus 10 C, 4x 2500W 2 Ohm (Wedge)
1x Linus 10 C, 4x2500 W 2 Ohm (Drumfill)
4x Camco V8 2x 5000 W 2 Ohm (Sidefills)

A separate monitor place with desk and technician can be booked extra if you need it.
Just get back to our technical contact person. (technik@backstage.eu)

Mics / DI's:

7x Shure SM58
7x Shure SM57
2x Shure Beta 52A
2x Shure Beta 91A
1x Shure Beta 56A
1x AKG D112
6x Sennheiser e604
2x Sennheiser e906 4x Audix ADX51
2x BSS AR-133 DI active
6x Palmer DI passive
2x Shure PGA48 (Talkback)

Misc:

K&M Mic-Stands
XLR-Cables
German Power-Cables and Distributions
1x Stepdown Transformer 110V (no Cables and Distributions)

Power:

1x 32 A CEKON RED (3 Phase) – Production Sound

Sound Limit:
99 dB(LAeq15min) measured at FoH

Please note that our FoH is located on a balcony above the audience.

LIGHT

Desk:

High End Systems Road Hog 4

Multicore:

4x XLR5 (Stage Left, 2 house & 1 guest line)
4x CAT 5
1x Elation eNode 8 pro

Backtruss:

4x Clay Paky Axcor 400 Spot
6x Clay Paky B-Eye K10
2x Clay Paky Stormy
20x Cameo Q- Spot (ACL rigged)
5x LED Bar (Backdrop Lights)
2x Elation Cuepix WW2

Fronttruss:

3x Elation Cuepix WW2
4x Clay Paky B-Eye K10

Sides (per side):

3x Briteq BT- Coloray 18FCR

Fog / Haze:

1x Look Viper - Smoke Machine
1x Look Unique2 - Hazer

Ambience / Disco:

12x LED Par Cameo
28x Cameo Q-Spot 40
2x LED Strip
6x Show Tec Phantom 65

Power:

1x 32 A CEE RED (3 Phase) – Production Light (Stage Left)

STAGE

The earliest Load In is 14:00.

If you need to Load In earlier, the production has to take the extra costs.

Width: 7,00 m

Depth: 5,00 m

Height: 1,00 m (measured from audience ground)

Clearance: 3,50 m (measured from stage)

Loading: 10,00 m with ramp

Backdrop-Pipe:

Alu-Pipe 6 m

2x Steel-Hoist max. 100kg WLL

There is no way to hang lamps in our rig. No lights are being suspended from the house light!

The are crash barriers in the hall, if these are required by the tour production, additional costs will be incurred, which must be borne by the production

If you need them, contact booking@backstage.eu

PYRO

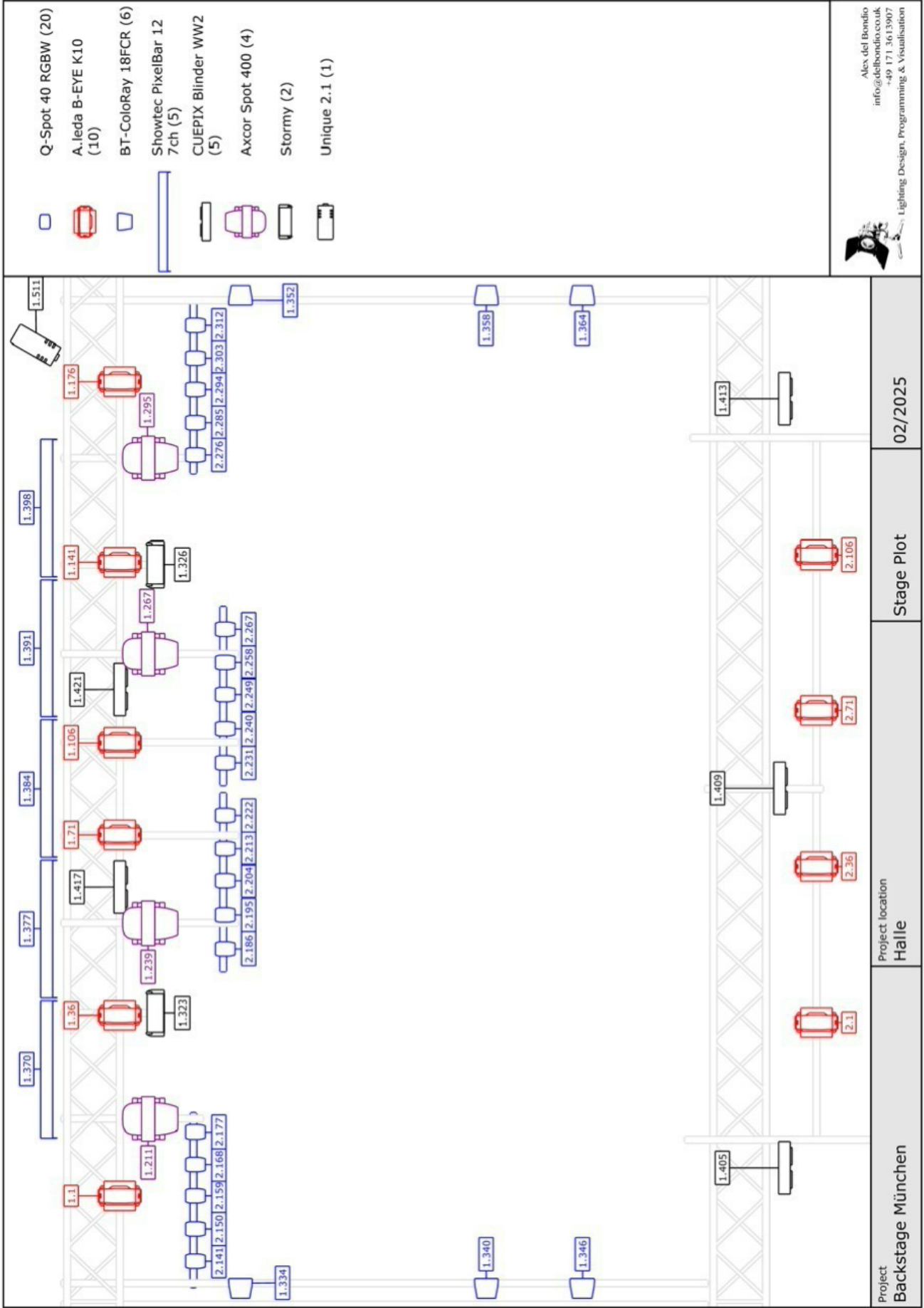
ANY KINDS OF FLAMES OR PYRO ARE STRICTLY FORBIDDEN!!!

LIGHTPATCH Halle

Universe	Channel	Fixture	Place	Mode
A	1	Clay Paky B-Eye K10	Backtruss Bot	Shapes Mode 35 ch
A	36	Clay Paky B-Eye K10	Backtruss Bot	Shapes Mode 35 ch
A	71	Clay Paky B-Eye K10	Backtruss Bot	Shapes Mode 35 ch
A	106	Clay Paky B-Eye K10	Backtruss Bot	Shapes Mode 35 ch
A	141	Clay Paky B-Eye K10	Backtruss Bot	Shapes Mode 35 ch
A	176	Clay Paky B-Eye K10	Backtruss Bot	Shapes Mode 35 ch
A	211	Clay Paky Axcor 400 Spot	Backtruss Top	Standard 28 ch
A	239	Clay Paky Axcor 400 Spot	Backtruss Top	Standard 28 ch
A	267	Clay Paky Axcor 400 Spot	Backtruss Top	Standard 28 ch
A	295	Clay Paky Axcor 400 Spot	Backtruss Top	Standard 28 ch
A	323	Clay Paky Stormy	Backtruss	Standard 3ch
A	326	Clay Paky Stormy	Backtruss	Standard 3ch
A	405	Elation CUEPIX Blinder WW2	Fronttruss	4 Channel
A	409	Elation CUEPIX Blinder WW2	Fronttruss	4 Channel
A	413	Elation CUEPIX Blinder WW2	Fronttruss	4 Channel
A	417	Elation CUEPIX Blinder WW2	Backtruss	4 Channel
A	421	Elation CUEPIX Blinder WW2	Backtruss	4 Channel
A	334	Briteq BT – Coloray 18 FCR	Side	6ch (RGBW + MasterDIM + Strobe
A	340	Briteq BT – Coloray 18 FCR	Side	6ch (RGBW + MasterDIM + Strobe
A	346	Briteq BT – Coloray 18 FCR	Side	6ch (RGBW + MasterDIM + Strobe

A	352	Briteq BT – Coloray 18 FCR	Side	6ch (RGBW + MasterDIM + Strobe)
A	358	Briteq BT – Coloray 18 FCR	Side	6ch (RGBW + MasterDIM + Strobe)
A	364	Briteq BT – Coloray 18 FCR	Side	6ch (RGBW + MasterDIM + Strobe)
A	370	Showtec Pixel Bar 12	Backdrop	Mode 4
A	377	Showtec Pixel Bar 12	Backdrop	Mode 4
A	384	Showtec Pixel Bar 12	Backdrop	Mode 4
A	391	Showtec Pixel Bar 12	Backdrop	Mode 4
A	398	Showtec Pixel Bar 12	Backdrop	Mode 4
A	511	Haze	Floor	Standard
Universe	Channel	Fixture	Place	Mode
B	1	Clay Paky B-Eye K10	Frontruss	35 ch
B	36	Clay Paky B-Eye K10	Frontruss	35 ch
B	71	Clay Paky B-Eye K10	Frontruss	35 ch
B	106	Clay Paky B-Eye K10	Frontruss	35 ch
B	141	Cameo Q- Spot 40 RGBW	ACL	9 ch
B	150	Cameo Q- Spot 40 RGBW	ACL	9 ch
B	159	Cameo Q- Spot 40 RGBW	ACL	9 ch
B	168	Cameo Q- Spot 40 RGBW	ACL	9 ch
B	177	Cameo Q- Spot 40 RGBW	ACL	9 ch
B	186	Cameo Q- Spot 40 RGBW	ACL	9 ch
B	195	Cameo Q- Spot 40 RGBW	ACL	9 ch
B	204	Cameo Q- Spot 40 RGBW	ACL	9 ch
B	213	Cameo Q- Spot 40 RGBW	ACL	9 ch
B	222	Cameo Q- Spot 40 RGBW	ACL	9 ch

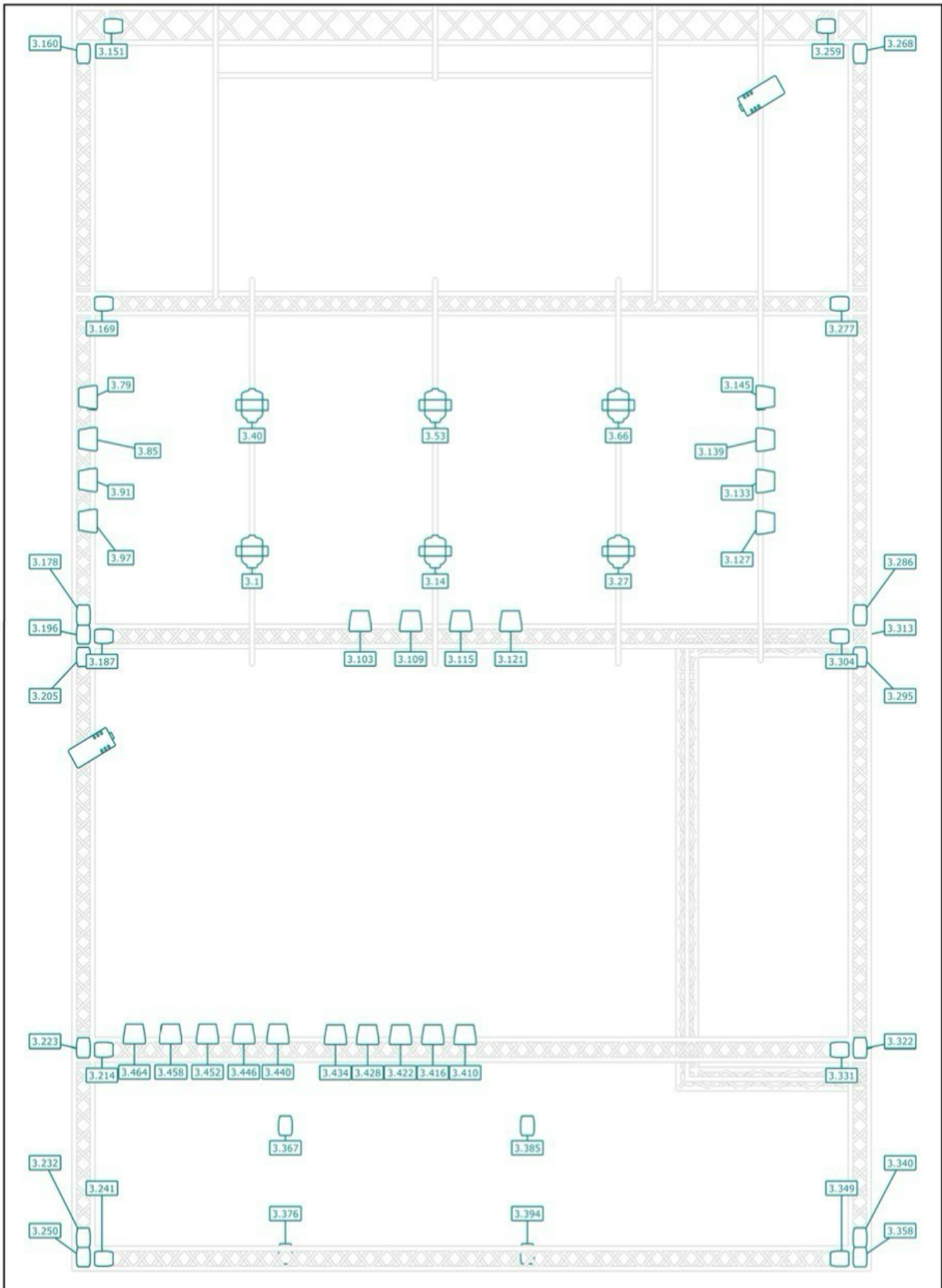
B	231	Cameo Q- Spot 40 RGBW	ACL	9 ch
B	240	Cameo Q- Spot 40 RGBW	ACL	9 ch
B	249	Cameo Q- Spot 40 RGBW	ACL	9 ch
B	258	Cameo Q- Spot 40 RGBW	ACL	9 ch
B	267	Cameo Q- Spot 40 RGBW	ACL	9 ch
B	276	Cameo Q- Spot 40 RGBW	ACL	9 ch
B	285	Cameo Q- Spot 40 RGBW	ACL	9 ch
B	294	Cameo Q- Spot 40 RGBW	ACL	9 ch
B	303	Cameo Q- Spot 40 RGBW	ACL	9 ch
B	312	Cameo Q- Spot 40 RGBW	ACL	9 ch
Universe	Channel	Fixture	Place	Mode
C	1	Showtec Phantom 65	Disco	Standard (13ch)
C	14	Showtec Phantom 65	Disco	Standard (13ch)
C	27	Showtec Phantom 65	Disco	Standard (13ch)
C	40	Showtec Phantom 65	Disco	Standard (13ch)
C	53	Showtec Phantom 65	Disco	Standard (13ch)
C	66	Showtec Phantom 65	Disco	Standard (13ch)
C	79	Cameo Outdoor Par Tri	House	6ch(I-S-R-G-B-MACRO)
C	85	Cameo Outdoor Par Tri	House	6CH(I-S-R-G-B-MACRO)



Alex del Bondio
 info@delbondio.co.uk
 +49 171 36 13907
 Lighting Design, Programming & Visualisation



Project location Halle	Stage Plot	02/2025
Project Backstage München		



Q-Spot 40 RGBW (28)		Cameo LED Outdoor Par (22)		Phantom 65 Spot (6)		Viper NT (2)	
Project Backstage München	Project location Halle	House Plot	Project date 02/2025	<p>Alex del Bondio info@delbondio.co.uk +49 171 3613907 Lighting Design, Programming & Visualisation</p>			