

# BACKSTAGE

## VENUE SPECS BACKSTAGE MUNICH WERK



### Index

2 - Sound

5 - Light

7 - Stage - Video - Pyro

8 - Lightpatch

14 - Lightplot

# SOUND

<u>Main Hang:</u>	Coda CIRAY
<u>Nearfill:</u>	6x Coda APS (10"/9")
<u>Delay:</u>	3x Coda APS
<u>PA Amping:</u>	6x Coda Linus 14D
<u>PA Controlling:</u>	2x Lake LM 44
<u>FoH Desk:</u>	Midas Heritage HD-96/ Local 8/8 In/Out
<u>FoH Siderack:</u>	1x USV
<u>Stagerack:</u>	Midas DL251 Stagebox (analog 48 Ch. In / analog 16 Ch. Out)
<u>Stagebox:</u>	48 Ch. analog passive 3 Way Split (2x Multipin, 1x XLR Out)
<u>Monitor Desk:</u>	Midas ProX / MIDAS M32 (Stage Right) incl. Shout box FoH ↔ Monitor
<u>Multicore:</u>	4x Cat5e 2x Cat5 2x Cat7 8x Analog Return 4x Analog Sends 2x AES/EBU
<u>Monitor Speaker:</u>	12x Coda Audio Cue One (2x12" /1,4" coax) active 4x Coda Audio G15 (1x15") - <i>Drumfill Sub</i> 1x Coda Audio Cue One (2x12" /1,4" coax) active - <i>Drumfill Top</i> 3x Coda Audio G15 (1x15") - <i>Sidefill Sub</i> 2x Coda Audio RX 40 (2x12"/2") active - <i>Sidefill Top</i>

Monitor Amping: 5x Linus 10C  
(4x2500 W / 2 Ohm) - *Wedge*  
1x Linus 10C  
(4x2500 W / 2 Ohm) - *Drumfill*  
4x Campo V8  
(2x5000 W / 2 Ohm) - *Sidefills*

Mics/DI: 10x Shure SM58  
8x Shure SM57  
1x Shure Beta 58A  
1x Shure Beta 57A  
2x Shure Beta 52A  
2x Shure Beta 91A  
3x Sennheiser e604  
5x Sennheiser e904  
2x Sennheiser e906  
2x Sennheiser MD421  
1x Audix i5  
1x Audix D6  
6x Audix ADX 51  
2x BSS AR 133 DI active  
10x Palmer DI passive  
2x Shure PG48 (Talkback)

Misc: 2x Stepdown Transformator 110V  
(no Cables and Distributions)  
K&M Mic-Stands  
XLR Cables  
German Power Cables and Distributions

Power: 1x 32A CEE Red (3 Phase)  
(Stage Right) - *Production Sound*

**A separate monitor place with desk and technician can be booked extra if you need it.**

**Just get back to our technical contact person.**

**([technik@backstage.eu](mailto:technik@backstage.eu))**

**Amptown SR is NOT getting moved or dismantled for whatever possible reason.**

**It will remain stationary, but if you want to use space there you can build around it.**

**Sound Limit: 99dB(LAeg15min) measured at FoH**

# Light

<u>Console:</u>	High End Systems Hog 4 High End Road Hog 3 Playback Wing
<u>Art-Net/sACN:</u>	1x Swisson ArtNet Node 1x NETGEAR JGS516 16 Port
<u>Lights Sidetrack:</u>	1x USV 1x NETGEAR JGS516 16 Port
<u>Multicore:</u>	4x Cat7 6x DMX 5 Pin 1x DMX 3 Pin 1x SMX 3 Pin (Return)
<u>Dimmer:</u>	3x SmartDim 12x 2,3kW - Digital Dimmer 24 Dimmer Channels total 17 Dimmer Channels free for Production/Floor 3x 5 Way DMX Splitter/Booster 2x 6 Way Schuko Break-Out Box
<u>Backtruss:</u>	6x Clay Paky A.Leda B-Eye K10 6x Clay Paky Axcor Spot 400 2x Clay Paky Stormy 8x Showtec Pixel Bar 12 2x Elation Cuepix WW2
<u>Midtruss:</u>	4x Clay Pakt A.Leda B-Eye K10 4x Clay Paky Axcor Spot 400 20x Cameo Q-Spot 40 (ACL-rigged) 3x ETC Source Four Zoom
<u>Fronttruss:</u>	8x Robe Robin Wash 300 4x ETC Source Four Zoom 2x Clay Paky Stormy 4x Elation Cuepix WW2

Sides: 8x BriteQ BT ColoRay 18FCR (4 each side)

Fog/Haze: 1x Look Solutions Viper NT (Smoke Machine)  
2x Look Solutions 2.1 (Hazer)

Ambience/Disco: 16x BriteQ BT ColoRay 18 FCR  
24x Cameo Q-Spot 40  
10x Showtec Phantom Spot 65

Power: 1x 125A CEE RED (3-Phase) - SL  
1x 63A CEE RED (3-Phase) - SL  
2x 32A CEE RED (3-Phase) - SL/SR  
2x 16A CEE RED (3-Phase) - SL/SR

Side Room: 10x Stairville LED Vintage Bowl 50  
6x Cameo Q-Spot 40  
8x BriteQ BT CooloRay 18 FCR

## Stage

**The earliest Load In is 13:00.**  
**If you need to load in earlier, the production has to take**  
**the extra costs.**

Stage: Concrete Event Stage  
10,00m Width  
7,00m Depth  
1,20m Height

Stage Height 3,33m !!!  
Ground Level 10m

Backdrop-Pipe: 2-Point Truss 10m  
2x Steel-Hoist max 100kg WLL

**There is no way to hang lamps in our rig!**  
**No lights are being suspended from the house rig!**

## Video

Stage - FOH: 1x R/G/B/H/V

## Pyro

**Pyro and all kinds of fire/flames are strictly forbidden!**

# Lightpatch Backstage Werk

Uni	Ch	Fixture	Mode	Location
A	1	Clay Paky A.Leda B-EYE K10	Shapes Mode (35 Ch)	Backtruss
A	36	Clay Paky A.Leda B-EYE K10	Shapes Mode (35 Ch)	Backtruss
A	71	Clay Paky A.Leda B-EYE K10	Shapes Mode (35 Ch)	Backtruss
A	106	Clay Paky A.Leda B-EYE K10	Shapes Mode (35 Ch)	Backtruss
A	141	Clay Paky A.Leda B-EYE K10	Shapes Mode (35 Ch)	Backtruss
A	176	Clay Paky A.Leda B-EYE K10	Shapes Mode (35 Ch)	Backtruss
A	211	Clay Paky A.Leda B-EYE K10	Shapes Mode (35 Ch)	Midtruss
A	246	Clay Paky A.Leda B-EYE K10	Shapes Mode (35 Ch)	Midtruss
A	281	Clay Paky A.Leda B-EYE K10	Shapes Mode (35 Ch)	Midtruss
A	316	Clay Paky A.Leda B-EYE K10	Shapes Mode (35 Ch)	Midtruss
A	351	Clay Paky Stormy	3 Channel	Midtruss
A	354	Clay Paky Stormy	3 Channel	Midtruss
A	357	Clay Paky Stormy	3 Channel	Fronttruss
A	360	Clay Paky Stormy	3 Channel	Fronttruss
A	363	BriteQ BT-ColoRay 18FCR	RGBWIS (6 Ch)	Side SR
A	369	BriteQ BT-ColoRay 18FCR	RGBWIS (6 Ch)	Side SR
A	375	BriteQ BT-ColoRay 18FCR	RGBWIS (6 Ch)	Side SR
A	381	BriteQ BT-ColoRay 18FCR	RGBWIS (6 Ch)	Side SR
A	387	BriteQ BT-ColoRay 18FCR	RGBWIS (6 Ch)	Side SL
A	393	BriteQ BT-ColoRay 18FCR	RGBWIS (6 Ch)	Side SL
A	399	BriteQ BT-ColoRay 18FCR	RGBWIS (6 Ch)	Side SL
A	405	BriteQ BT-ColoRay 18FCR	RGBWIS (6 Ch)	Side SL
A	431	ETC Source Four Zoom	Single Dim	Fronttruss
A	432	ETC Source Four Zoom	Single Dim	Fronttruss
A	433	ETC Source Four Zoom	Single Dim	Fronttruss
A	434	ETC Source Four Zoom	Single Dim	Fronttruss
A	443	ETC Source Four Zoom	Single Dim	Midtruss
A	444	ETC Source Four Zoom	Single Dim	Midtruss
A	448	ETC Source Four Zoom	Single Dim	Midtruss

Uni	Ch	Fixture	Mode	Location
A	411	Elation Cupix WW2	Single Dim	Backtruss
A	412	Elation Cupix WW2	Single Dim	Backtruss
A	413	Elation Cupix WW2	Single Dim	Fronttruss
A	414	Elation Cupix WW2	Single Dim	Fronttruss
A	415	Elation Cupix WW2	Single Dim	Fronttruss
A	416	Elation Cupix WW2	Single Dim	Fronttruss

Uni	Ch	Fixture	Mode	Location
B	1	Robe Robin 300 LED Wash	Mode 2 (21 Ch)	Fronttruss
B	22	Robe Robin 300 LED Wash	Mode 2 (21 Ch)	Fronttruss
B	43	Robe Robin 300 LED Wash	Mode 2 (21 Ch)	Fronttruss
B	64	Robe Robin 300 LED Wash	Mode 2 (21 Ch)	Fronttruss
B	85	Robe Robin 300 LED Wash	Mode 2 (21 Ch)	Fronttruss
B	106	Robe Robin 300 LED Wash	Mode 2 (21 Ch)	Fronttruss
B	127	Robe Robin 300 LED Wash	Mode 2 (21 Ch)	Fronttruss
B	148	Robe Robin 300 LED Wash	Mode 2 (21 Ch)	Fronttruss
B	169	Showtec Pixel Bar 12	Mode 4 (7 Ch)	Backdrop
B	176	Showtec Pixel Bar 12	Mode 4 (7 Ch)	Backdrop
B	183	Showtec Pixel Bar 12	Mode 4 (7 Ch)	Backdrop
B	190	Showtec Pixel Bar 12	Mode 4 (7 Ch)	Backdrop
B	197	Showtec Pixel Bar 12	Mode 4 (7 Ch)	Backdrop
B	204	Showtec Pixel Bar 12	Mode 4 (7 Ch)	Backdrop
B	211	Showtec Pixel Bar 12	Mode 4 (7 Ch)	Backdrop
B	218	Showtec Pixel Bar 12	Mode 4 (7 Ch)	Backdrop
B	225	Clay Paky Axcor Spot 400	Standard (28 Ch)	Backtruss
B	253	Clay Paky Axcor Spot 400	Standard (28 Ch)	Backtruss
B	281	Clay Paky Axcor Spot 400	Standard (28 Ch)	Backtruss
B	309	Clay Paky Axcor Spot 400	Standard (28 Ch)	Backtruss
B	337	Clay Paky Axcor Spot 400	Standard (28 Ch)	Backtruss
B	365	Clay Paky Axcor Spot 400	Standard (28 Ch)	Backtruss

Uni	Ch	Fixture	Mode	Location
B	393	Clay Paky Axcor Spot 400	Standard (28 Ch)	Midtruss
B	421	Clay Paky Axcor Spot 400	Standard (28 Ch)	Midtruss
B	449	Clay Paky Axcor Spot 400	Standard (28 Ch)	Midtruss
B	477	Clay Paky Axcor Spot 400	Standard (28 Ch)	Midtruss
B	511	Unique Hazer	Haze/Fan (2 Ch)	SL + SR

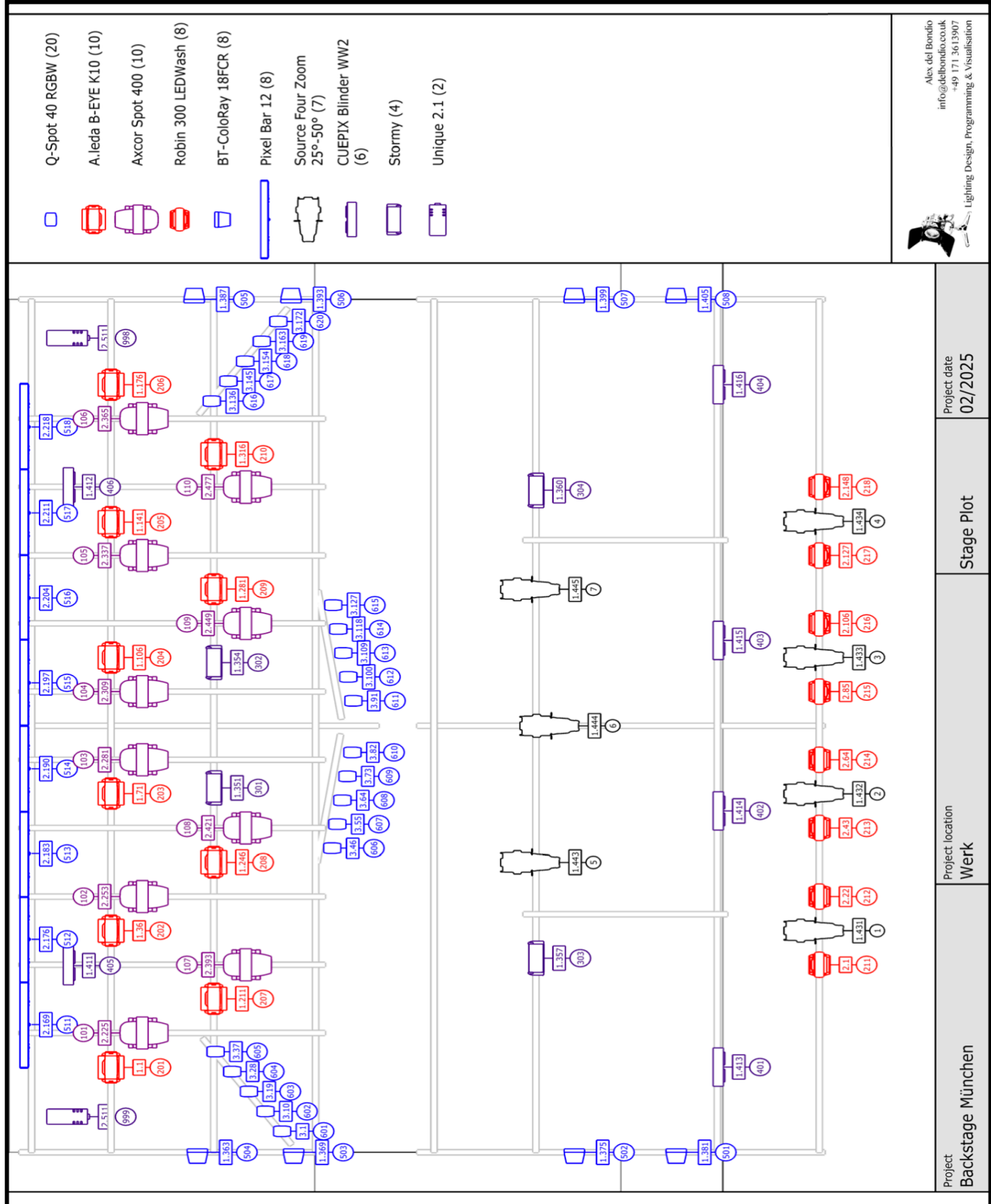
Uni	Ch	Fixture	Mode	Location
C	1	Cameo Q-Spot 40	9 Channel	ACL
C	10	Cameo Q-Spot 40	9 Channel	ACL
C	19	Cameo Q-Spot 40	9 Channel	ACL
C	28	Cameo Q-Spot 40	9 Channel	ACL
C	37	Cameo Q-Spot 40	9 Channel	ACL
C	46	Cameo Q-Spot 40	9 Channel	ACL
C	55	Cameo Q-Spot 40	9 Channel	ACL
C	64	Cameo Q-Spot 40	9 Channel	ACL
C	73	Cameo Q-Spot 40	9 Channel	ACL
C	82	Cameo Q-Spot 40	9 Channel	ACL
C	91	Cameo Q-Spot 40	9 Channel	ACL
C	100	Cameo Q-Spot 40	9 Channel	ACL
C	109	Cameo Q-Spot 40	9 Channel	ACL
C	118	Cameo Q-Spot 40	9 Channel	ACL
C	127	Cameo Q-Spot 40	9 Channel	ACL
C	136	Cameo Q-Spot 40	9 Channel	ACL
C	145	Cameo Q-Spot 40	9 Channel	ACL
C	154	Cameo Q-Spot 40	9 Channel	ACL
C	163	Cameo Q-Spot 40	9 Channel	ACL
C	172	Cameo Q-Spot 40	9 Channel	ACL

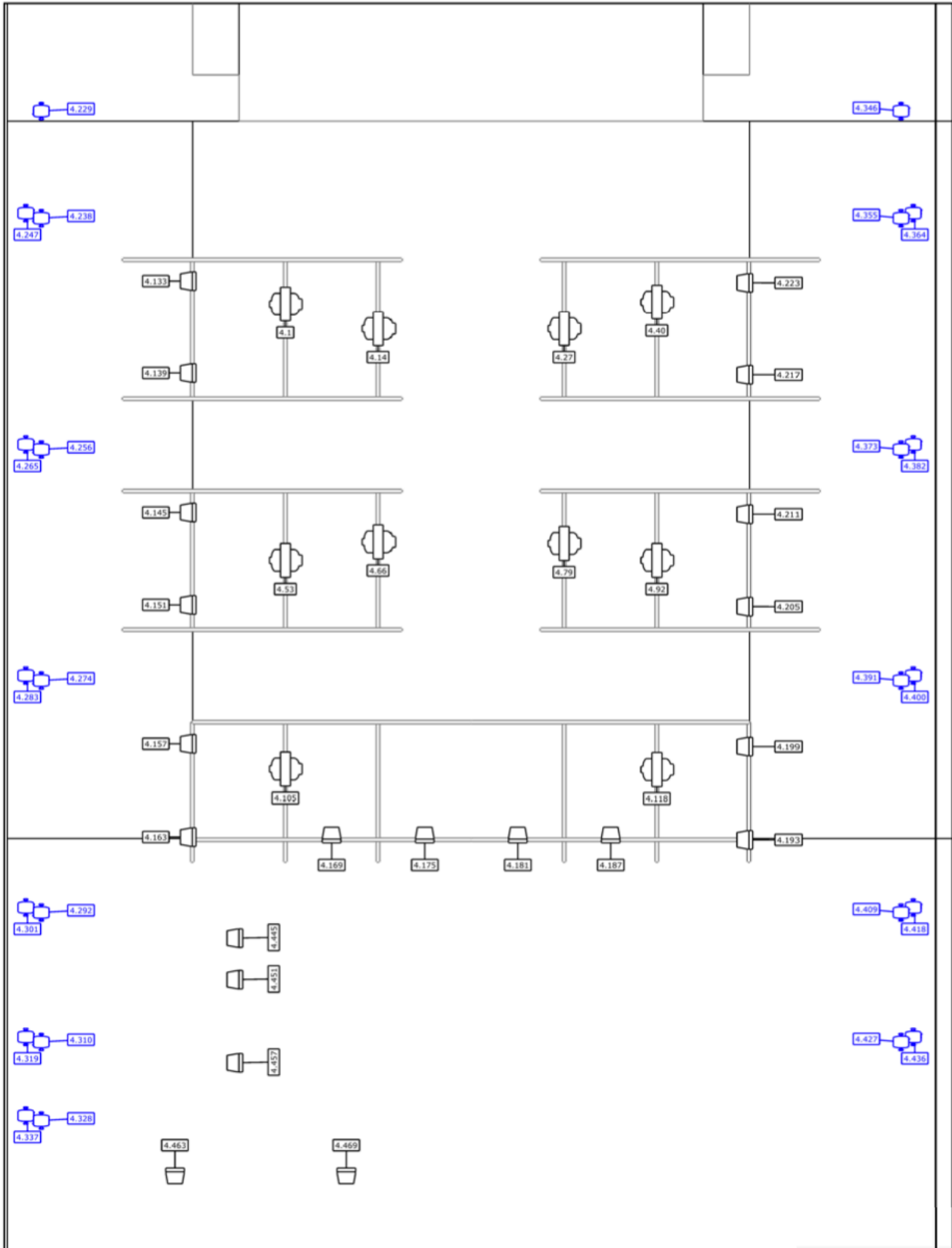
Uni	Ch	Fixture	Mode	Location
D	1	Showtec Phantom 65	13 Channel	Disco
D	14	Showtec Phantom 65	13 Channel	Disco
D	27	Showtec Phantom 65	13 Channel	Disco
D	40	Showtec Phantom 65	13 Channel	Disco
D	53	Showtec Phantom 65	13 Channel	Disco
D	66	Showtec Phantom 65	13 Channel	Disco
D	79	Showtec Phantom 65	13 Channel	Disco
D	92	Showtec Phantom 65	13 Channel	Disco
D	105	Showtec Phantom 65	13 Channel	Disco
D	118	Showtec Phantom 65	13 Channel	Disco
D	133	BriteQ BT-ColoRay 18FCR	RGBWIS (6 Ch)	Pool SR
D	139	BriteQ BT-ColoRay 18FCR	RGBWIS (6 Ch)	Pool SR
D	145	BriteQ BT-ColoRay 18FCR	RGBWIS (6 Ch)	Pool SR
D	151	BriteQ BT-ColoRay 18FCR	RGBWIS (6 Ch)	Pool SR
D	157	BriteQ BT-ColoRay 18FCR	RGBWIS (6 Ch)	Pool SR
D	163	BriteQ BT-ColoRay 18FCR	RGBWIS (6 Ch)	Pool SR
D	169	BriteQ BT-ColoRay 18FCR	RGBWIS (6 Ch)	Pool FOH
D	175	BriteQ BT-ColoRay 18FCR	RGBWIS (6 Ch)	Pool FOH
D	181	BriteQ BT-ColoRay 18FCR	RGBWIS (6 Ch)	Pool FOH
D	187	BriteQ BT-ColoRay 18FCR	RGBWIS (6 Ch)	Pool FOH
D	193	BriteQ BT-ColoRay 18FCR	RGBWIS (6 Ch)	Pool SL
D	199	BriteQ BT-ColoRay 18FCR	RGBWIS (6 Ch)	Pool SL
D	205	BriteQ BT-ColoRay 18FCR	RGBWIS (6 Ch)	Pool SL
D	211	BriteQ BT-ColoRay 18FCR	RGBWIS (6 Ch)	Pool SL
D	217	BriteQ BT-ColoRay 18FCR	RGBWIS (6 Ch)	Pool SL
D	223	BriteQ BT-ColoRay 18FCR	RGBWIS (6 Ch)	Pool SL
D	229	Cameo Q-Spot 40	9 Channel	Pillars
D	238	Cameo Q-Spot 40	9 Channel	Pillars
D	247	Cameo Q-Spot 40	9 Channel	Pillars
D	256	Cameo Q-Spot 40	9 Channel	Pillars
D	265	Cameo Q-Spot 40	9 Channel	Pillars

Uni	Ch	Fixture	Mode	Location
D	274	Cameo Q-Spot 40	9 Channel	Pillars
D	283	Cameo Q-Spot 40	9 Channel	Pillars
D	292	Cameo Q-Spot 40	9 Channel	Pillars
D	301	Cameo Q-Spot 40	9 Channel	Pillars
D	310	Cameo Q-Spot 40	9 Channel	Pillars
D	319	Cameo Q-Spot 40	9 Channel	Pillars
D	328	Cameo Q-Spot 40	9 Channel	Pillars
D	337	Cameo Q-Spot 40	9 Channel	Pillars
D	346	Cameo Q-Spot 40	9 Channel	Pillars
D	355	Cameo Q-Spot 40	9 Channel	Pillars
D	364	Cameo Q-Spot 40	9 Channel	Pillars
D	373	Cameo Q-Spot 40	9 Channel	Pillars
D	382	Cameo Q-Spot 40	9 Channel	Pillars
D	391	Cameo Q-Spot 40	9 Channel	Pillars
D	400	Cameo Q-Spot 40	9 Channel	Pillars
D	409	Cameo Q-Spot 40	9 Channel	Pillars
D	418	Cameo Q-Spot 40	9 Channel	Pillars
D	427	Cameo Q-Spot 40	9 Channel	Pillars
D	436	Cameo Q-Spot 40	9 Channel	Pillars
D	445	BriteQ BT-ColoRay 18FCR	RGBWIS (6 Ch)	Merch Pedestal
D	451	BriteQ BT-ColoRay 18FCR	RGBWIS (6 Ch)	Merch Pedestal
D	457	BriteQ BT-ColoRay 18FCR	RGBWIS (6 Ch)	Merch Pedestal
D	463	BriteQ BT-ColoRay 18FCR	RGBWIS (6 Ch)	Merch Pedestal
D	475	Eurolite LED Pix Bar 144	RGBIS (5 Ch)	Steps
D	480	Eurolite LED Pix Bar 144	RGBIS (5 Ch)	Steps
D	485	Eurolite LED Pix Bar 144	RGBIS (5 Ch)	Steps

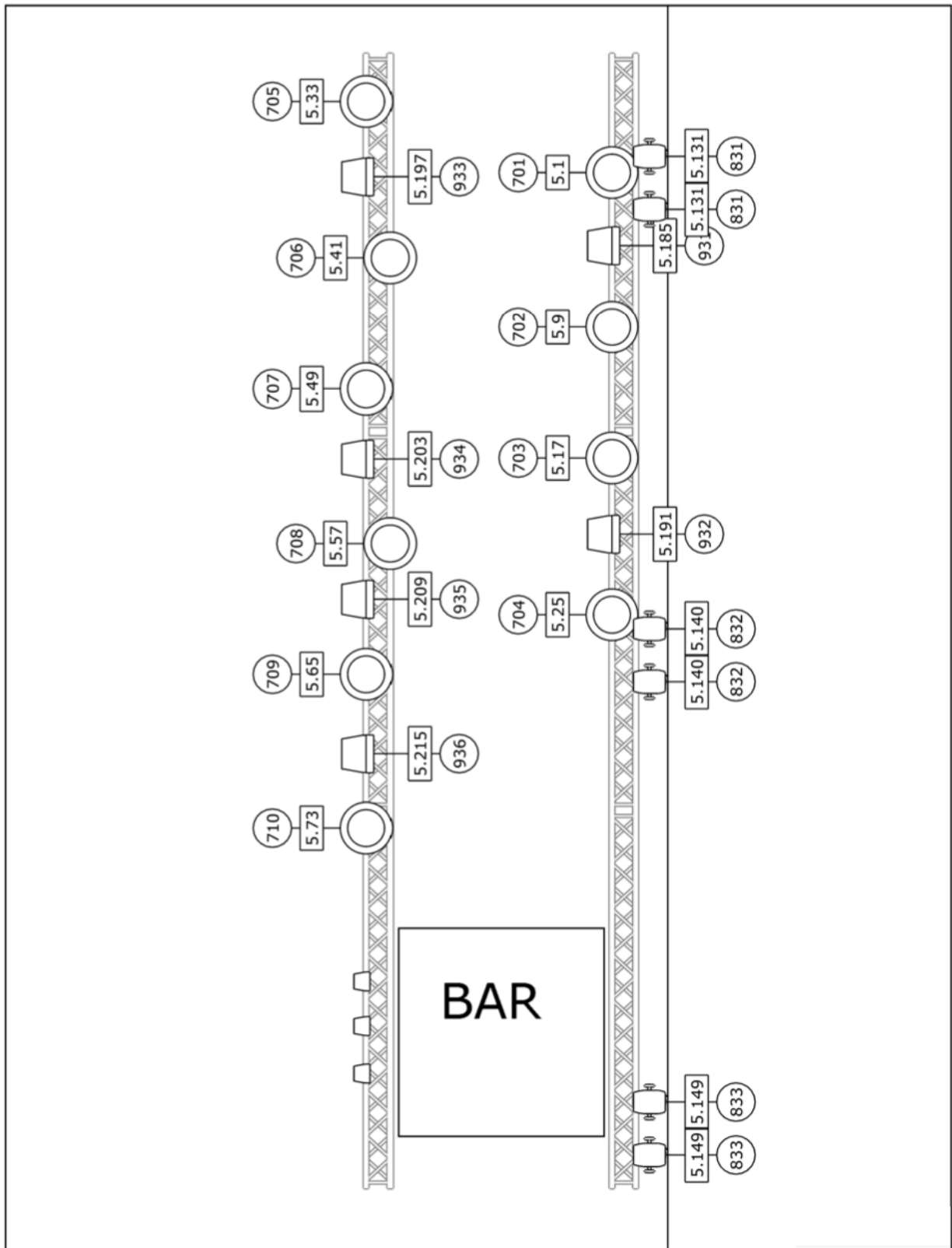
Uni	Ch	Fixture	Mode	Location
E	1	Stairville LED Vintage Bowl 50	RGBA-S-I (8 Ch)	Merch-Area
E	9	Stairville LED Vintage Bowl 50	RGBA-S-I (8 Ch)	Merch-Area
E	17	Stairville LED Vintage Bowl 50	RGBA-S-I (8 Ch)	Merch-Area
E	25	Stairville LED Vintage Bowl 50	RGBA-S-I (8 Ch)	Merch-Area
E	33	Stairville LED Vintage Bowl 50	RGBA-S-I (8 Ch)	Merch-Area
E	41	Stairville LED Vintage Bowl 50	RGBA-S-I (8 Ch)	Merch-Area
E	49	Stairville LED Vintage Bowl 50	RGBA-S-I (8 Ch)	Merch-Area
E	57	Stairville LED Vintage Bowl 50	RGBA-S-I (8 Ch)	Merch-Area
E	65	Stairville LED Vintage Bowl 50	RGBA-S-I (8 Ch)	Merch-Area
E	73	Stairville LED Vintage Bowl 50	RGBA-S-I (8 Ch)	Merch-Area
E	131	Cameo Q-Spot 40	9 Channel	Pillars
E	140	Cameo Q-Spot 40	9 Channel	Pillars
E	149	Cameo Q-Spot 40	9 Channel	Pillars
E	158	Cameo Q-Spot 40	9 Channel	Pillars
E	167	Cameo Q-Spot 40	9 Channel	Pillars
E	176	Cameo Q-Spot 40	9 Channel	Pillars
E	185	BriteQ BT-ColoRay 18FCR	RGBWIS (6 Ch)	Merch-Area
E	191	BriteQ BT-ColoRay 18FCR	RGBWIS (6 Ch)	Merch-Area
E	197	BriteQ BT-ColoRay 18FCR	RGBWIS (6 Ch)	Merch-Area
E	203	BriteQ BT-ColoRay 18FCR	RGBWIS (6 Ch)	Merch-Area
E	209	BriteQ BT-ColoRay 18FCR	RGBWIS (6 Ch)	Merch-Area
E	215	BriteQ BT-ColoRay 18FCR	RGBWIS (6 Ch)	Merch-Area
E	221	BriteQ BT-ColoRay 18FCR	RGBWIS (6 Ch)	Merch-Area
E	227	BriteQ BT-ColoRay 18FCR	RGBWIS (6 Ch)	Merch-Area

<b><u>Art-Net / sACN SETUP:</u></b>
<b>House Console IP: 192.168.0.81</b>
<b>Node IP: 192.168.0.91</b>
<b>Network Mask: 255.255.255.0</b>
<b>Guest IP: 192.168.0.100 - ...</b>





Q-Spot 40 RGBW (30)		BT-ColoRay 18FCR (29)		Phantom 65 Spot (10)		<p>Alex del Bondio info@delbondio.co.uk +49 171 3613907 Lighting Design, Programming &amp; Visualisation</p>
Project Backstage München	Project location Werk	House Plot	Project date 02/2025			



BT-ColoRay 18FCR, TourLED 42 (11)		LED Vintage Bowl 50 RGBA (10)		Q-Spot 40 RGBW (6)		<p>Alex del Bondio info@alexdelbondio.co.uk +49 171 3613907 Lighting Design, Programming &amp; Visualisation</p>
Project Backstage München	Project location Werk	Werkstatt	Project date 02/2025			